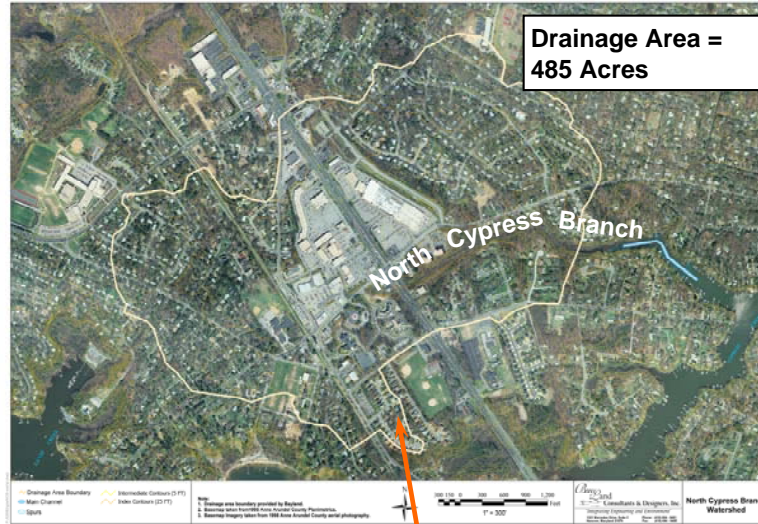


# North Cypress Branch Watershed Action Plan

## Restoring Severna Park's Natural Heritage

Located in Anne Arundel County, Maryland, North Cypress Branch is a tributary to the Magothy River. The watershed is home to the community of Severna Park.



Today, 100 years later, the watershed has become the active center of the town's commercial development. But with that development, the watershed has suffered damage caused by unmanaged runoff from roads, parking lots and buildings.

When Severna Park was founded in 1960, it was a town of riverside cottages with a railroad stop and a few stores. Cypress Branch ran clean and clear, and the stream supported a diversity of fish, shellfish, and underwater grasses.



In 2005, groups within Severna Park formed a partnership with the local government to clean up the watershed. That partnership, the Greater Severna Park Watershed Action Group, actively reaches out to the business and residential communities to educate and encourage environmental awareness through implementation of the North Cypress Branch Watershed Action Plan.

# North Cypress Branch Watershed Action Plan: Restoring Severna Park's Natural Heritage

The North Cypress Branch Watershed Action Plan provides a framework for citizens, businesses, government to coordinate and collaborate on watershed activities to restore land and water resources within Greater Severna Park area of Anne Arundel County, Maryland.

## Greater Severna Park Watershed Action Group

- Implement the Watershed Action Plan
- Coordinate Watershed Activities
  - Outreach and Education
  - Identify and Develop Restoration Projects
- Create Partnerships
- Identify and Obtain Funding
- Match partners with projects
- Accomplish restoration

## Watershed Action Group Partners

- Greater Severna Park Chamber of Commerce
- Association for Severna Park Improvement, Renewal, and Enhancement (ASPIRE)
- Greater Severna Park Council (GSPC)
- Magothy River Association (MRA)
- Severn River Association (SRA)
- Business and Commercial Property Owners
- Anne Arundel County Government

## Watershed Action Group Activities



Innovative Stormwater Management Tour for Severna Park Business and Community Groups



Community Outreach at the Severna Park 4<sup>th</sup> of July Festival

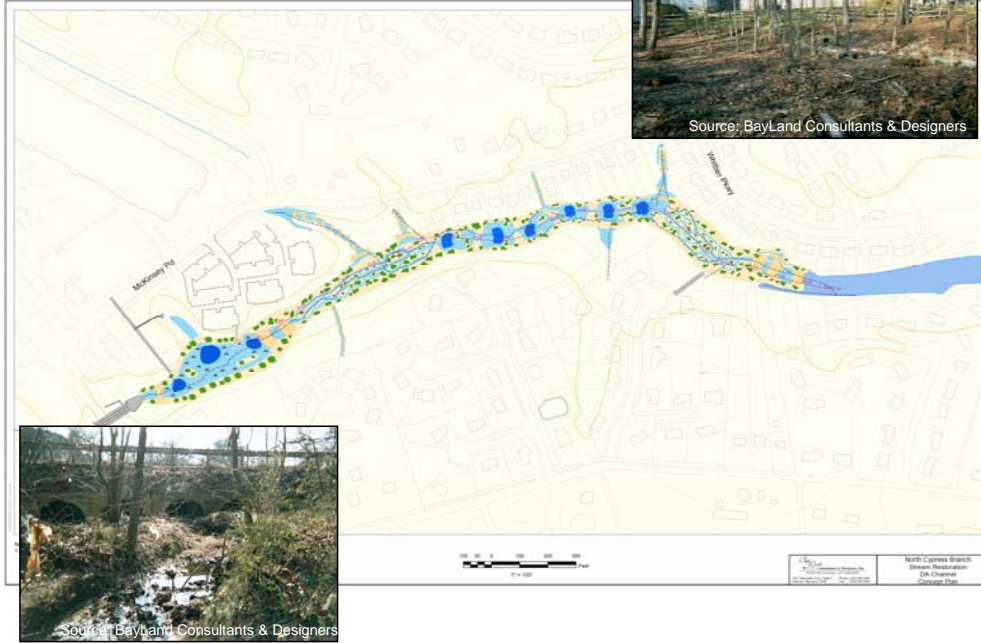


Citizens Discover Effect of Unmanaged Stormwater Runoff

# North Cypress Branch Watershed Action Plan: Restoring Severna Park's Natural Heritage

## How Can You Help? Be A Watershed Champion

Learn About Anne Arundel County's North Cypress Branch Stream Restoration Project



Located downstream from the Ritchie Highway culverts, the project will restore 2,600 linear feet of degraded stream, create 6.2 acres of wetlands, and decrease nutrient and sediment loads to the Magothy River and the Chesapeake Bay.

### Assist GSP-WAG to finalize Communication Plan for North Cypress Branch Restoration

Reach Out to the Media

Talk to your Neighbors

### Attend "Healing the River" Workshop

Plant Rain Gardens

Use Rain Barrels

Composting

Landscape with Native Plants

**When**  
 October 17, 2006 at 6:30 PM  
 October 19, 2006 at 6:30 PM

**Where**  
 Folger McKinsey Elementary School  
 Severna Park Elementary School



To Become a Watershed Champion, contact the Greater Severna Park Watershed Action Group (GSP-WAG)  
 Carla Logan: 410-787-5132 or Charlie Menzie: 410-987-7272

